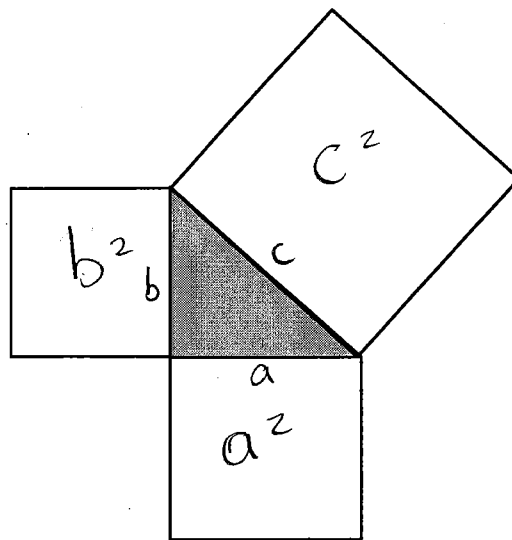


# CHECK YOUR UNDERSTANDING QUESTIONS

Before you start, circle 3 questions that you think are most important for your learning. The answer key is on Mrs. Tennant's website.

- Write the formula that describes this model. Explain how it works (you can use the model to help).



$$a^2 + b^2 = c^2$$

The sum of the squares on the shorter two sides equals the square of the longer side.

- Find the missing sides of the following right triangles

$a^2 + b^2 = c^2$   
 $5^2 + 12^2 = c^2$   
 $25 + 144 = c^2$   
 $169 = c^2$   
 $\sqrt{169} = c$   
 $13 = c$

$4^2 + 9^2 = c^2$   
 $16 + 81 = c^2$   
 $97 = c^2$   
 $9.8 = c$

$4.1^2 + 3.6^2 = c^2$   
 $16.81 + 12.96 = c^2$   
 $\sqrt{29.77} = c$   
 $5.5 = c$

$10.1^2 + 7.3^2 = c^2$   
 $102.01 + 53.29 = c^2$   
 $\sqrt{155.3} = c$   
 $12.5 = c$